

Dispensing Peristaltic Pump

LabF1, LabF3, LabF6

3 years warranty



Medicine and chemical dispensing, such as oral liquid, diagnostic reagents.

Cosmetic dispensing, such as perfume, lip gloss.



Handling Dispenser

- Based on ergonomics engineering design
- Elegant appearance

Accessories



① Filling Countersunk

② Filling Nozzle

③ Foot Pedal Switch

Features

Imported 4.3" industrial grade color LCD screen display, with touch screen control.

Can preset dispensing volume, dispensing time, pause time and copy numbers.

With intelligent calibration function and online micro adjusting function.

The pump can store 60 commonly used filling modes.

Back suction angle setting, avoid liquid drop off when the pump stops working.

New flow rate mode, can be used for continuous transferring.

Can communicate with balance, closed-loop control.

Dispensing Peristaltic Pump

F1, F3, F6

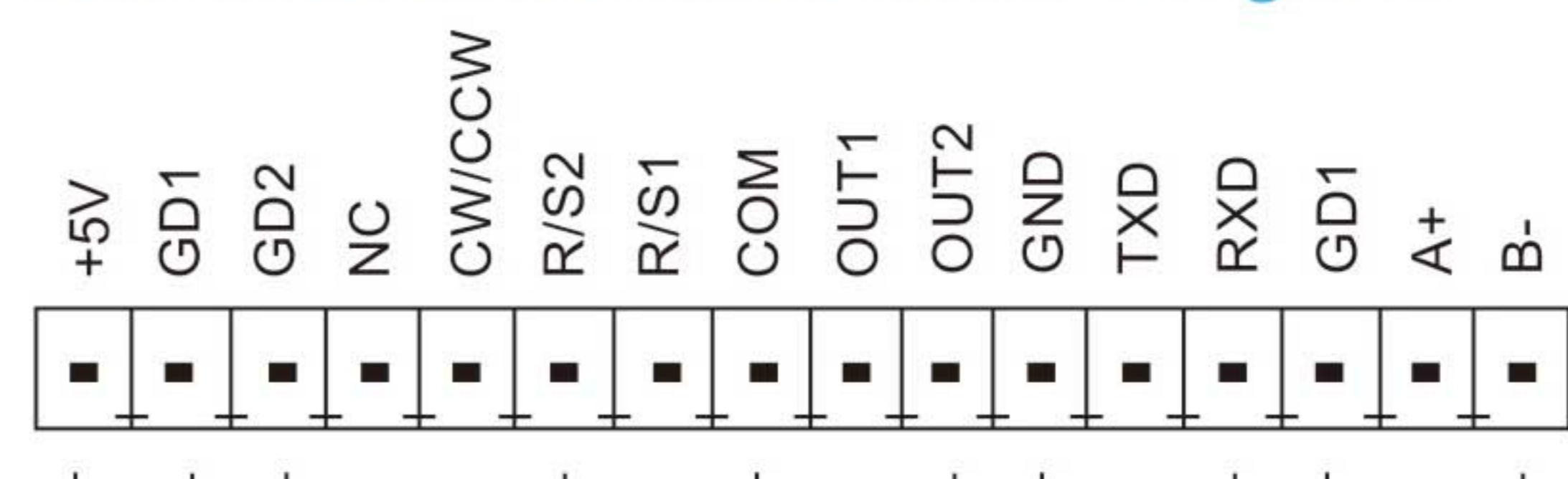
3 years warranty



Model Number

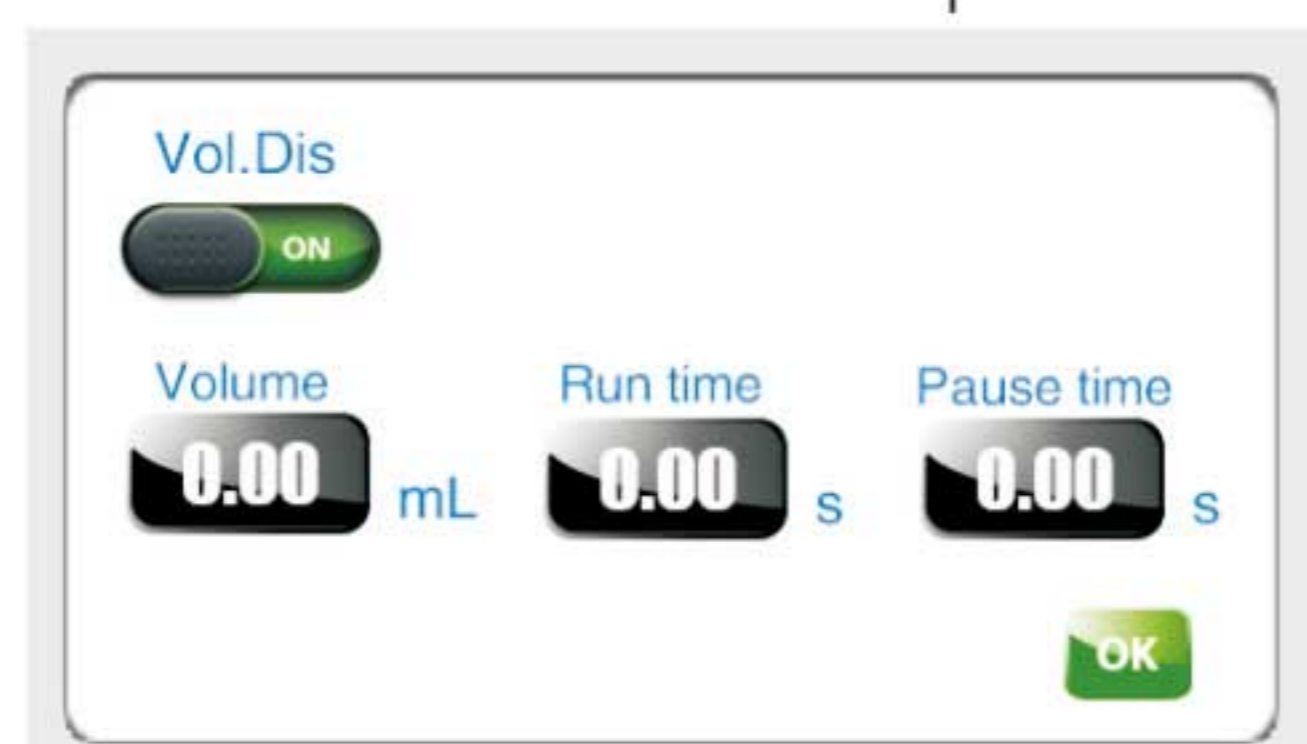
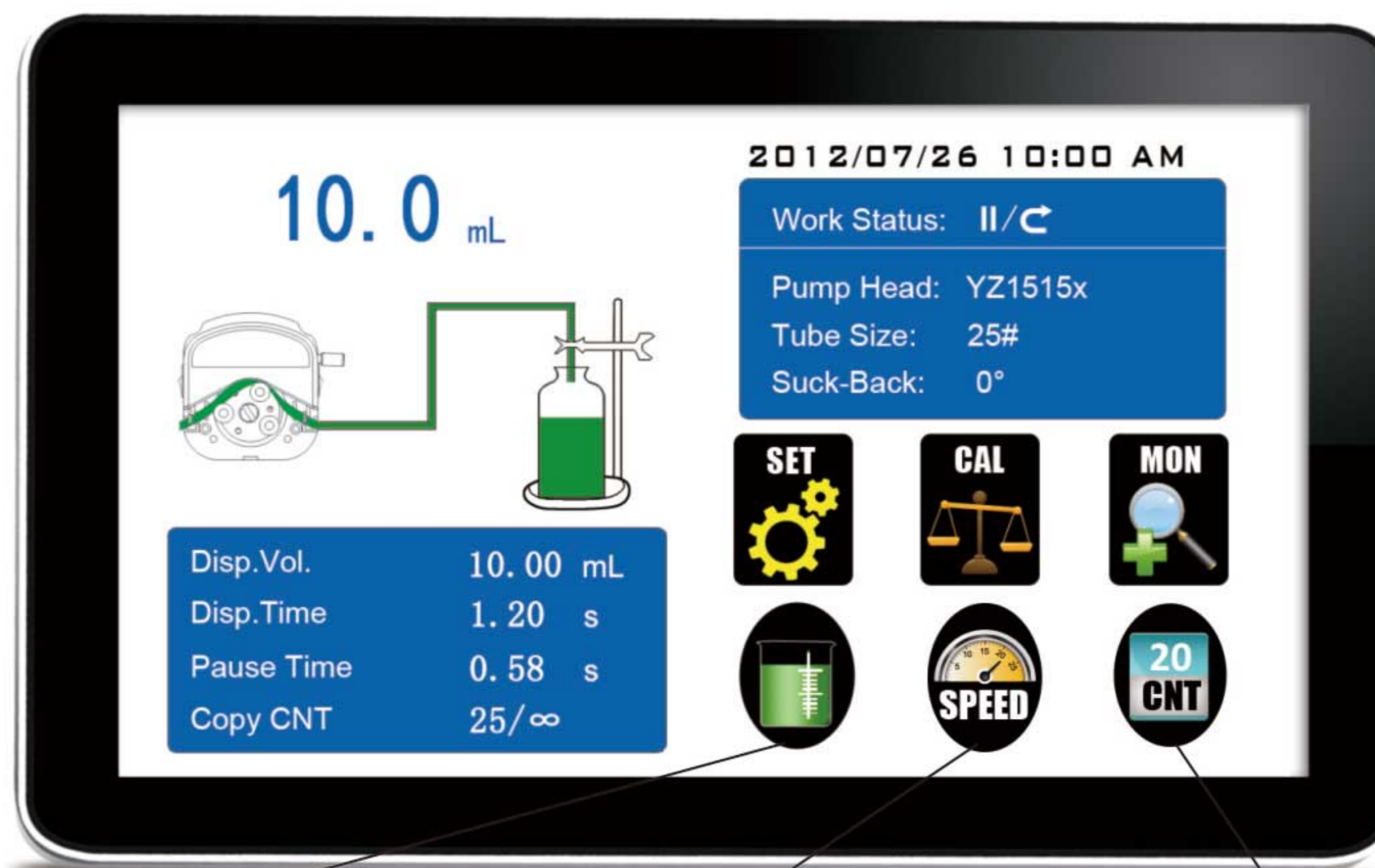
F1, F3, F6

External Control Schematic Diagram

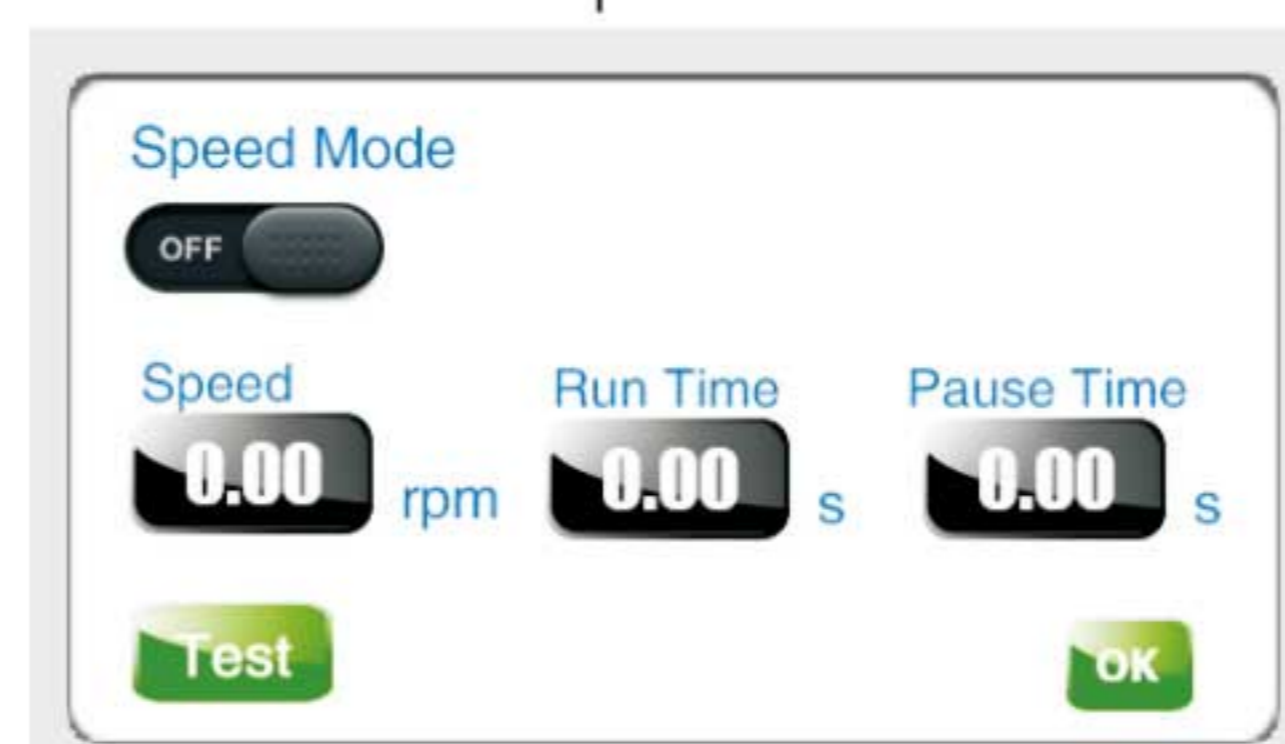


Technical Specifications			
Flow rate range	LabF1/F1: 0.00166~775mL/min LabF3/F3: 0.00166~1808mL/min LabF6/F6: 0.00166~3100mL/min	Start/stop, direction signal	Passive switch signal, such as foot pedal switch; Active switch signal: 5V, 12V and 24V for option
Speed range	1-600rpm	Output interface	Output motor working status (Open-Collector output)
Speed resolution	0.01rpm	Communication interface	RS232, RS485 support Modbus protocol (RTU mode)
Dispensing volume range	0.1-9999.99mL	Power supply	AC 220V±10% 50Hz/60Hz (Standard)
Dispensing volume resolution	0.01mL		AC 110V±10% 50Hz/60Hz (Optional)
Dispensing time	0.1-9999.99s	Outlet pressure	0.1Mpa(0.8~1.0mm wall thickness tubing)
Pause time	0.1-9999.99s		0.1~0.27Mpa(1.6~2.4mm wall thickness tubing)
Time resolution	0.01s	Drive dimension (L×W×H)	LabF Series: 261.4×157.3×236.9 mm
Copy numbers	1-9999 times, setting '0' means unlimited		F Series: 212×152×243mm
Back suction angle	0-360°	Drive weight	LabF Series: 4.40 kg
Dispensing accuracy	<±0.5%		F Series: 4.20 kg
Motor type	Stepper motor	Power consumption	<50W
Display	Industrial grade 4.3" color LCD display	Condition temperature	0-40°C
Control method	Touch screen and Mechanical keypad	Relative humidity	<80%
Keypad lifetime	300,000 times	IP rate	IP31

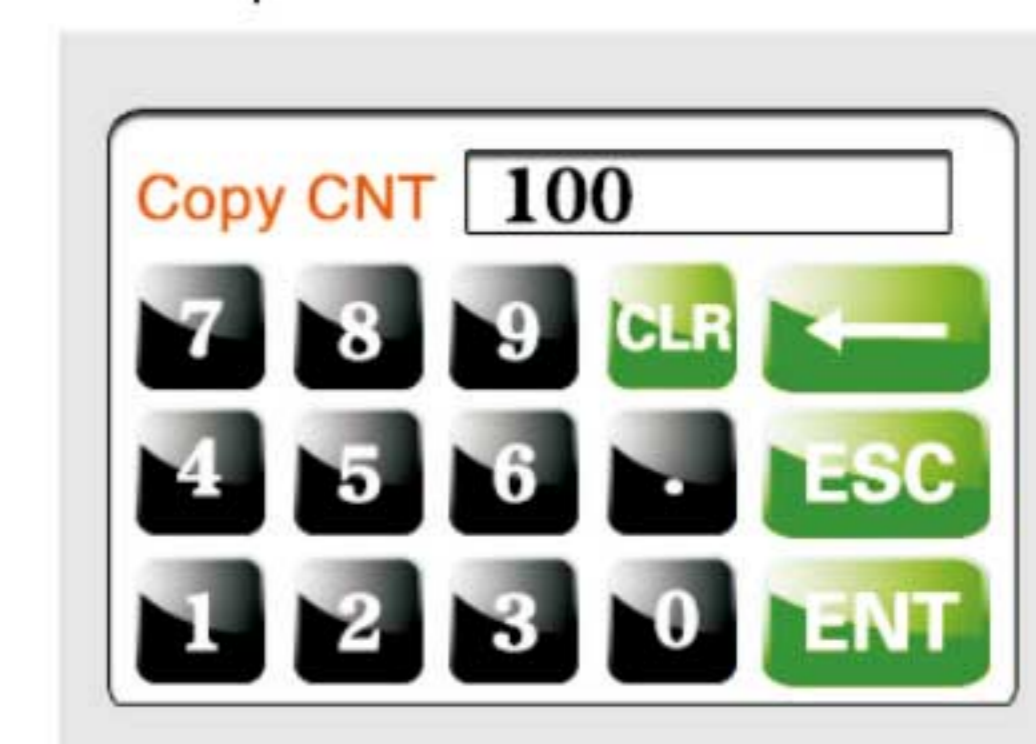
Product Composition and Flow Rate Range					
Flow Rates Peristaltic Pump		Pump Head & Flow Rate (mL/min)			
		YZ1515x	YZ2515x	MC1~MC12(10)	MC1~MC12(6)
Drive&speed	Tubing	13#, 14#, 19#, 16# 25#, 17#, 18#	15#, 24#	Inner diameter: 0.13-3.17mm Wall thickness: 0.8-1mm	
	LabF1/F1	1-150 rpm	0.07~570	1.7~435	0.00166-49(working speed≤150rpm)
LabF3/F3	1-350 rpm	0.07~1330	1.7~1015	0.00185-65(working speed≤150rpm)	
LabF6/F6	1-600 rpm	0.07~2280	1.7~1740		
Drive&speed	Tubing	New Generation Easy Load Type Pump Head		New Generation Multichannel Type Pump Head	
		EasyPump (1.60 mm wall thickness)	EasyPump (2.40 mm wall thickness)	8 rollers	
		13#, 14#, 19#, 16# 25#, 17#, 18#	15#, 24#, 35#, 36#	Inner diameter: 0.13-3.17mm Wall thickness: 0.8-1mm	
	LabF1/F1	1-150 rpm	0.053~645	1.8~775	0.002-52(working speed≤150rpm)
	LabF3/F3	1-350 rpm	0.053~1505	1.8~1808	
LabF6/F6	1-600 rpm	0.053~2580	1.8~3100		



Volume dispensing interface



Speed dispensing interface



Repeat numbers interface